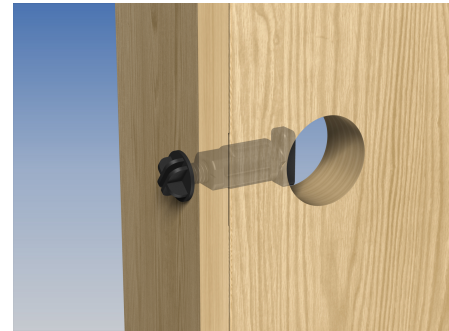
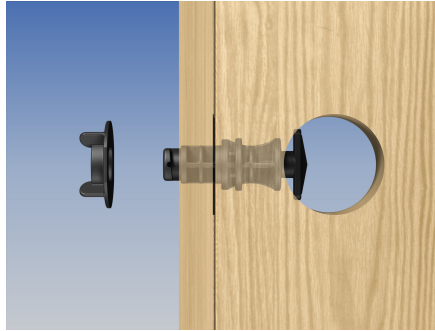
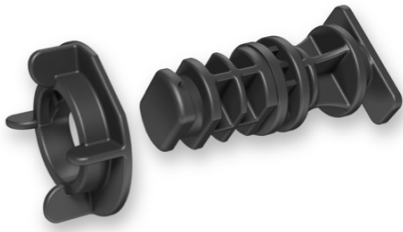




# Secure-It-Fast

Protective Packaging Solutions



## Aribell **Twist Plug**

These Twist Door Plugs are designed to protect interior and exterior doors during shipment.

This part is available with flat caps (white) or lipped caps (black). Lipped caps may be necessary for smaller jamb widths or for customers who prefer a tighter fit.

- Fast Twist and Snap installation. More efficient than screw plug styles
- Insures proper door alignment, and protects reveal during shipping
- Designed to fit a 1" Bore Hole, 2 3/8" backset
- Helpful in determining alignment during door installation
- A quality, cost effective alternative to expensive competitor plugs

**Part #: ABTR-SDP637**  
(packaged 1,000 pcs/box)